



Medreel®

Manufactured By APC GROUP, INC.

The Medreel is the first UL/ CSA Green Dot Certified retractable cord reel available for use in healthcare facilities. With its patented design, durable polypropylene case, and convenient retraction mechanism, make this the ideal choice for electrical power cord management in a wide range of applications in the medical field.

The MedReels are generally ceiling mounted in the operating rooms and various labs, x-ray/radiology, crash carts, portable diagnostic equipment, and other medical equipment. Once retracted the cord is secure in its waterproof fully enclosed durable case while not in use.



HEALTH CARE USES

THE MEDREEL IS DESIGNED FOR USE IN A VARIETY OF HEALTHCARE FACILITIES INCLUDING:

- Operating Theaters
- Labs / x-ray / Radiology
- Crash Carts
- Veterinary Clinics
- Hospitals / Urgent Cares
- Medical Schools
- Medical Device OEM's



MEDREEL BENEFITS

THE MEDREEL LEASH PROVIDES MANY BENEFITS FOR ITS USE IN MANY DIFFERENT ENVIRONMENTS

- Reduces "trip and fall claims"
- Increases employee productivity
- Provides for a safe working environment
- Provides electrical power to where it's needed
- Retracts out of the way when not in use
- Can be ceiling, wall or, cart mounted

PRODUCT SPECIFICATIONS

POWER CORD

Gauge/Conductor: 12/3 Type:
SJTOW 14/3 AWG
Length: 10', 20', 15' (12/3) and *30'
Rating: Green Dot 5-15 /5-20 P/R

CASE HOUSING

Dimensions - 9" x 12" x 3"
Molded Polypropylene 3.175 mm
Thickness 94V-0
Flammability Rating:

Receptacle/Plug

Rated-125VAC NEMA 5-20
P/R or 5-15 P/R
Dual Duplex Receptacle -
NEMA 5-15R OR 5-20R

Circuit Breaker

20 AMP

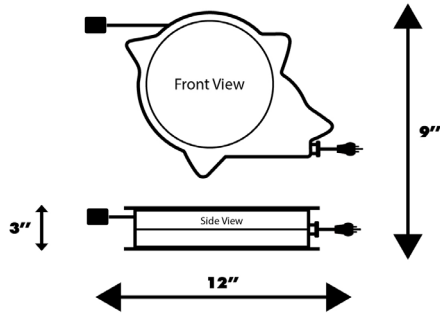
*30 ft length only available for the M and AO models

PRODUCT FEATURES

THE MEDREEL MEETS OR EXCEEDS STANDARDS REQUIRED FOR MEDICAL USE

Green Dot Certified
Watertight Case
Internal Circuit Breaker
Water Resistant
Can withstand temperatures from - 220°F
ETL Tested
Indoor Rated

CORD REEL DIMENSIONS



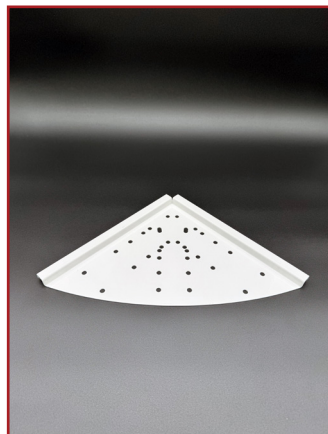
Small cord reel provides 10 - 40 feet in 12, 14, and 16 gauge with 20, 15, and 13 amp breakers, flexible to - 57°F. (requires additional mounting brackets).



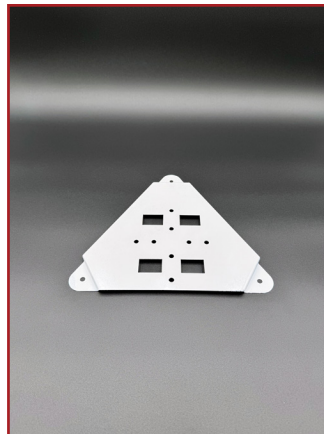
MOUNTING BRACKETS



MRCB Ceiling Or Wall Mounting Bracket



MRCP Acoustic Ceiling Mounting Plate



MRMP Cart, Wall & Pole Bracket

SAMPLES ARE AVAILABLE UPON REQUEST FOR EVALUATIONS AT NO CHARGE



PRODUCT TESTING & FEATURES

CONFORMS TO UL LISTINGS

1363A, 60601 UL Std. 355
Certified to CSA C22.2 Std No. 308
Hose Down - CSA 6.8.2
Strain Relief - CSA 6.4
Flame Retardant - UL 94-94V-0

FUNCTION & FEATURES

MULTIPLE INSTALLATION OPTIONS WITH EASY, CONVENIENT OPERATION

Convenient retraction mechanism

SUPPLYING POWER TO THE HEALTHCARE INDUSTRY AND BEYOND

CONFORMS TO UL LISTINGS 1363-A, 60601, 355, CSA C22.2 std. No. 308




The number one retractable power cord solution for hospitals and medical facilities.

APC Group, Inc. The manufacturer of the MedReel, is the leading designer, developer, manufacturer and supplier of watertight indoor/outdoor retractable power cord reels and electrical wire and cable products for commercial, industrial, and consumer applications.


All of APC Group, Inc. products, including the MedReel, are manufactured in Phoenix, Arizona.

MedReel products are sold directly to a wide range of customers, including hospitals, military, contractors, distributors, and original manufacturers ("OEMs").

Unit Type	Model Number	Length	Breaker Amp	Gauge	Retractable End	Non-Retracting End	Ship Weight
 <p>Mounting brackets sold separately</p>	MR-101514-D	10ft	15	14/3	Dual Duplex	Male	10lbs
	MR-201514-D	20ft	15	14/3	Dual Duplex	Male	10lbs
	MR-102014-D	10ft	20	14/3	Dual Duplex	Male	10lbs
	MR-202014-D	20ft	20	14/3	Dual Duplex	Male	10lbs
	MR-152012-D	15ft	20	12/3	Dual Duplex	Male	10lbs

Unit Type	Model Number	Length	Breaker Amp	Gauge	Retractable End	Non-Retracting End	Ship Weight
 <p>Mounting brackets sold separately</p>	MR-101514-M	10ft	15	14/3	Male	Female	10lbs.
	MR-201514-M	20ft	15	14/3	Male	Female	10lbs.
	MR-301514-M	30ft	15	14/3	Male	Female	10lbs.
	MR-102014-M	10ft	20	14/3	Male	Female	10lbs.
	MR-202014-M	20ft	20	14/3	Male	Female	10lbs.
	MR-302014-M	30ft	20	14/3	Male	Female	10lbs.
	MR-102012-M	10ft	20	12/3	Male	Female	10lbs.
	MR-202012-M	20ft	20	12/3	Male	Female	10lbs.

Unit Type	Model Number	Length	Breaker Amp	Gauge	Retractable End	Non-Retracting End	Ship Weight
 <p>Mounting brackets sold separately</p>	MR-101514-AD	10ft	15	14/3	Male	Dual Duplex	10lbs.
	MR-201514-AD	20ft	15	14/3	Male	Dual Duplex	10lbs.
	MR-301514-AD	30ft	15	14/3	Male	Dual Duplex	10lbs.
	MR-102014-AD	10ft	20	14/3	Male	Dual Duplex	10lbs.
	MR-202014-AD	20ft	20	14/3	Male	Dual Duplex	10lbs.
	MR-302014--AD	30ft	20	14/3	Male	Dual Duplex	10lbs.
	MR-102012-AD	10ft	20	12/3	Male	Dual Duplex	10lbs.
	MR-202012-AD	20ft	20	12/3	Male	Dual Duplex	10lbs.

Mounting Brackets	Model #		Shipping Weight
	MRCB	MedReel ceiling bracket.	2lbs.
	MRMP	MedReel mounting plate.	2lbs.
	MPCP	MedReel ceiling plate. Mounts above drop ceiling, two support MRCB bracket.	2lbs.

APC GROUP INC.
219 S. William Dillard
Building. 4
Gilbert AZ 85233



Visit medreel.com
for additional information